

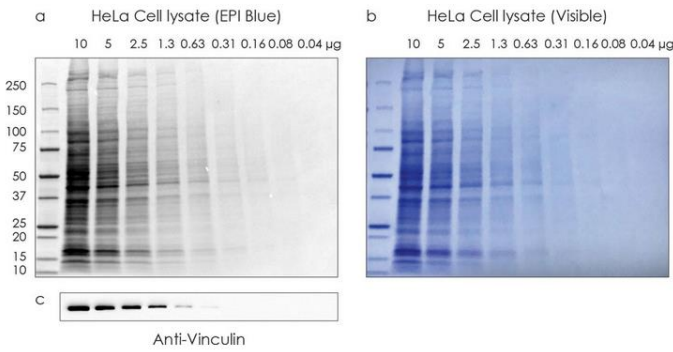
Rapid Protein Stain

Description:

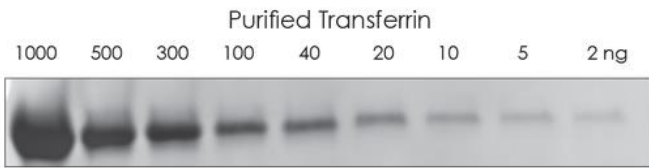
Rapid Protein Stain is a rapid and sensitive protein detection solution on Nitrocellulose and PVDF membranes after transfer from polyacrylamide gels and it is alternative to Ponceau S stain. The dark blue color provides a high contrast which facilitates the acquisition of visible images. The dye may also be imaged with epi blue light.

- **SENSITIVE** – Detect as little as 2–10ng per band
- **RAPID** – Detect proteins in 20 minutes
- **COMPATIBLE** – Western blot ready, no destaining required

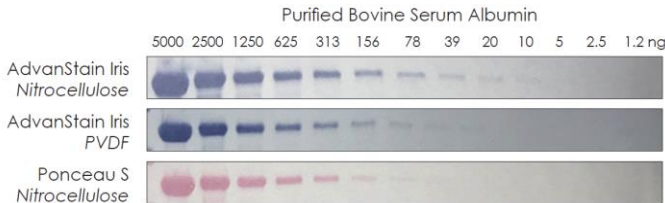
- No destaining required and flexible imaging



- Maximum sensitivity



- More sensitive when compared to Ponceau S



- Re-use up to 3X

Short Protocol:

Note: This protocol is for staining one full-size mini-blot. If using a larger blot, adjust the volume of staining and washing solution appropriately.

1. Following the transfer, immerse the blot in at least 10mL of water for 5 minutes with gentle agitation.
2. Decant water and dispense 10mL of Rapid Protein Stain solution to the mini-blot, ensuring that it is completely immersed for 10 minutes with gentle agitation.
3. Rinse the blot with high quality water.
 - 3X quickly with ~25mL water for ~5 seconds per rinse
4. Image the blot for permanent record. If imaging wet, immediately place the blot in an Imaging Folder before imaging. If imaging dry, allow the blot to completely dry (no visible streaks should be observed).
5. Following imaging, immerse the blot in at least 10mL of water for 5 minutes with gentle agitation before proceeding with Western blotting. If the PVDF blot was imaged dry, rewet with methanol prior to rinsing with water.

For Orders:

Catalog Number	Product	Size
NB0503732D1	Rapid Protein Stain	250 mL